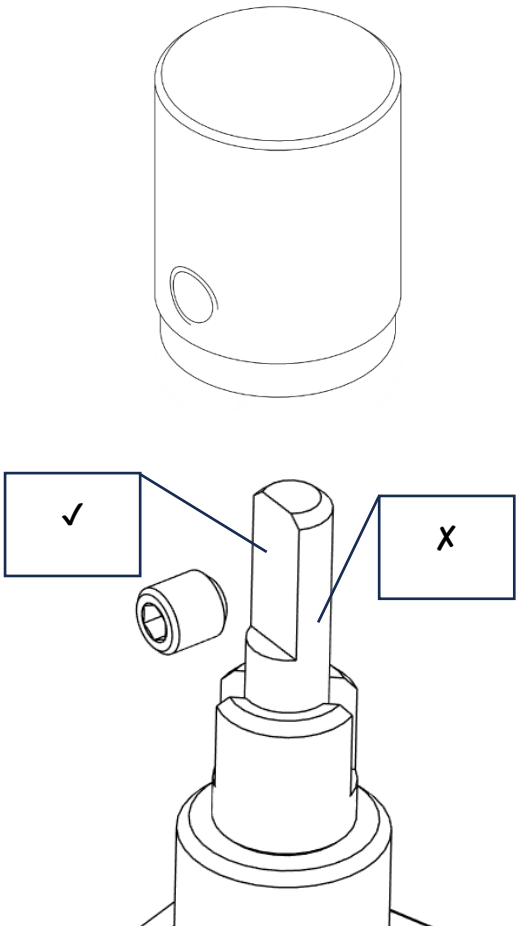
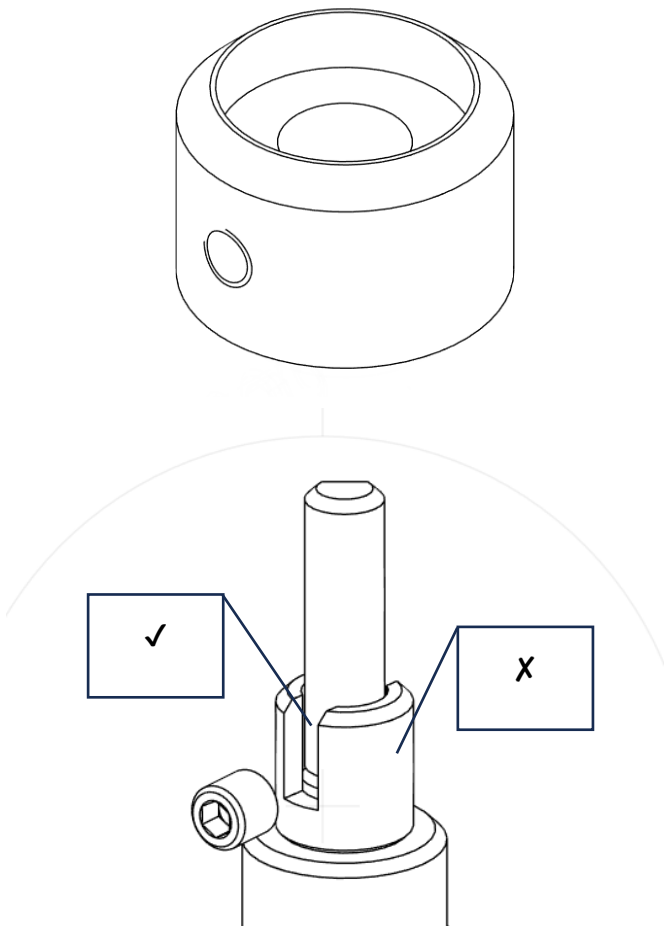


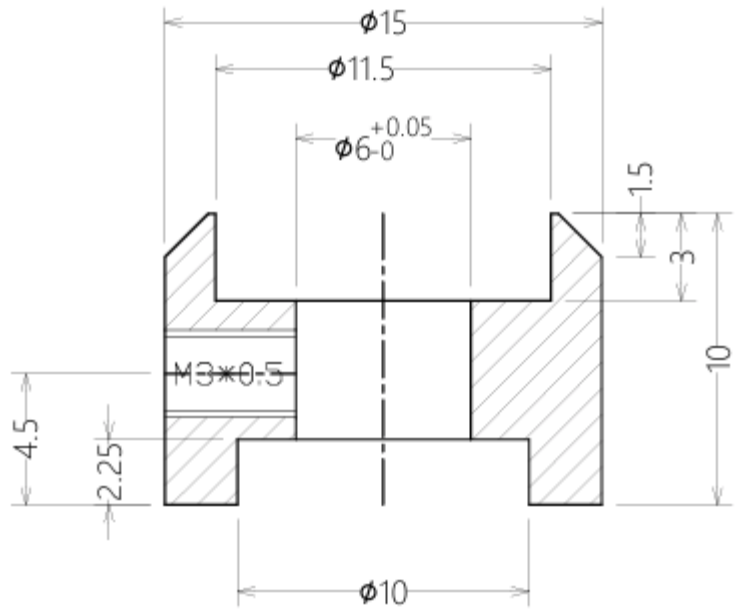
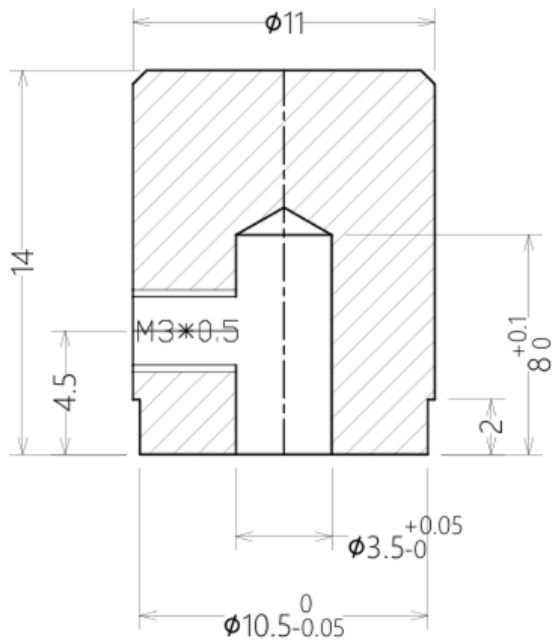
For better assembly and operation, follow these instructions:

- 1. Ensure that the set screw tip tightens on the **designated suitable area (✓)** and never on the **non-suitable area (X)**.
- 2. Adjust the height as desired, then tighten the screw fully, but do not overtighten.

When tightening the set screw of the OUTER encoder, ensure that it does not obstruct the movement of the INNER encoder switch.



VENDOR:	SIMFLIGHT SERVICES
PRODUCT:	DUAL ROTARY KNOB
MODEL:	EC11 - PEC11 - V1
MATERIAL:	BLACK ANODIZED ALUMINUM



VENDOR:	SIMFLIGHT SERVICES
PRODUCT:	DUAL ROTARY KNOB
MODEL:	EC11 - PEC11 - V1
MATERIAL:	BLACK ANODIZED ALUMINUM